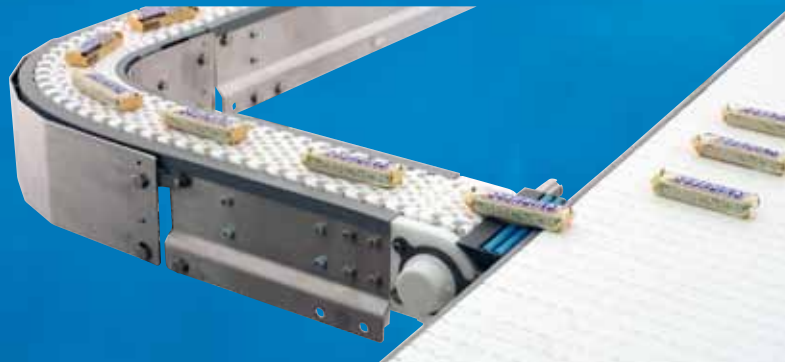


DORNER[®]

MOVE FAST. MOVE SMART.



- » Hygienic Design
- » Incredible Delivery
- » Fast & Effective Sanitation



AquaGard[®]

AquaPruf[®]

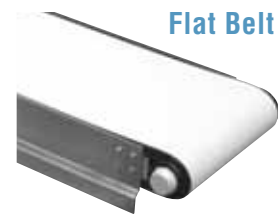
Contributing two innovative lines of stainless steel, sanitary conveyors, AquaGard[®] and AquaPruf[®], we help the food industry perform at its best.

Both conveyor lines are hygienically designed for fast and effective cleaning - from occasional wipe down to frequent high pressure wash down. We have unequalled expertise in the unique challenges of the food industry and tackle virtually any food application from packaging to raw proteins and dairy.

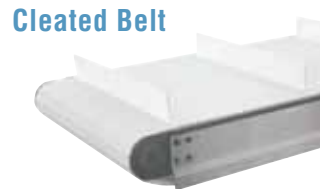
Sanitary designs are available for BISSC, GMA, and AMI standards. USDA red meat and poultry accepted equipment certification is also available. All materials are FDA approved including belting.

AQUAGARD®*

TIG Welded Stainless - Belt and Plastic Chain 



Flat Belt



Cleated Belt

- Sanitary Design
- Low Pressure Wash - 100 PSI
- Mild Chemical Resistance
- Maximum Flexibility
- Increase Throughput
- Reduce Product Loss
- FDA & BISSC Certified



Z-Configurations



Curves



Open Frame Design with Minimal Horizontal Surfaces



Z-Frames with Angles 5° to 60°



Curves 45°, 90°, 135° & 180°

AQUAPRUF®*

TIG Welded Stainless - Belt and Plastic Chain 



Flat Belt

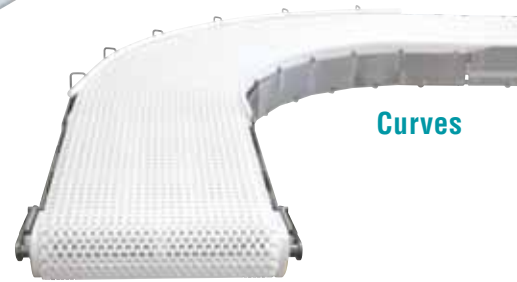


Cleated Belt

- Wash-down and sanitary environments
- High Pressure Wash - 1500 PSI
- Chemical Resistance
- USDA, AMI, & FDA
- No Horizontal Surfaces for Optimum Cleaning
- Solid UHMW Wear Strips Lift Out of Frame



Z-Configurations



Curves

Tool-less Tip-Up Pulley
for quick release of belt tension

Tool-less Belt Lifters
for easy access to the inside of the conveyor

Frame Cutouts
for continuous access to the inside of the conveyor



Belt Lifters



Solid UHMW Wear Strips

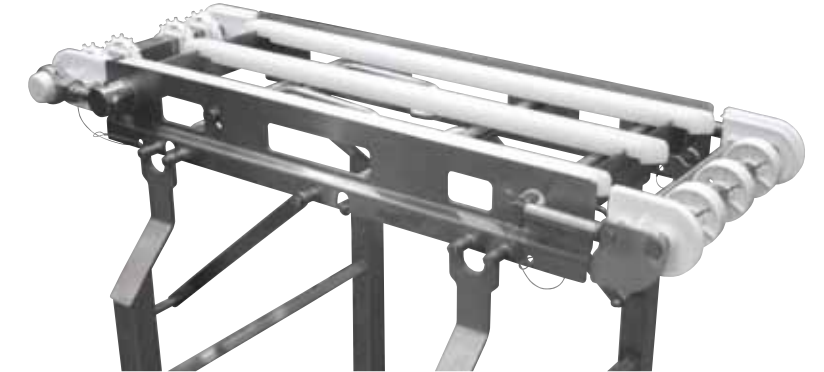


Tip-Up Pulley

AQUAPRUF® ULTIMATE*

TIG Welded Stainless - Positive Drive Belting and Plastic Chain 

- USDA Red Meat & Poultry Accepted Equipment
- Complete Dis-Assembly without Tools
- Hygienic Design for the Harshesht Environments
- High Pressure Wash - 1500 PSI
- USDA, AMI, & FDA



Fully Assembled

to

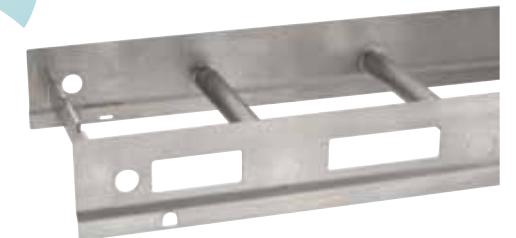
Completely Dis-Assembled in Minutes

Conveyor Cleaning Preparation*

1 Person

3 Minutes Per Section

No Problem!



*Plastic chain removal requires a hammer and tap

* **Stainless Steel Conveyors** 10 day shipping

ENGINEERED APPLICATIONS

For more information, visit our website at www.dorner.com



DORNER MFG. CORP.
PO Box 20 • 975 Cottonwood Ave.
Hartland, WI 53029 USA

INSIDE THE USA
TEL: 800.397.8664
FAX: 800.369.2440

OUTSIDE THE USA
TEL: 262.367.7600
FAX: 262.367.5827

www.dorner.com
info@dorner.com